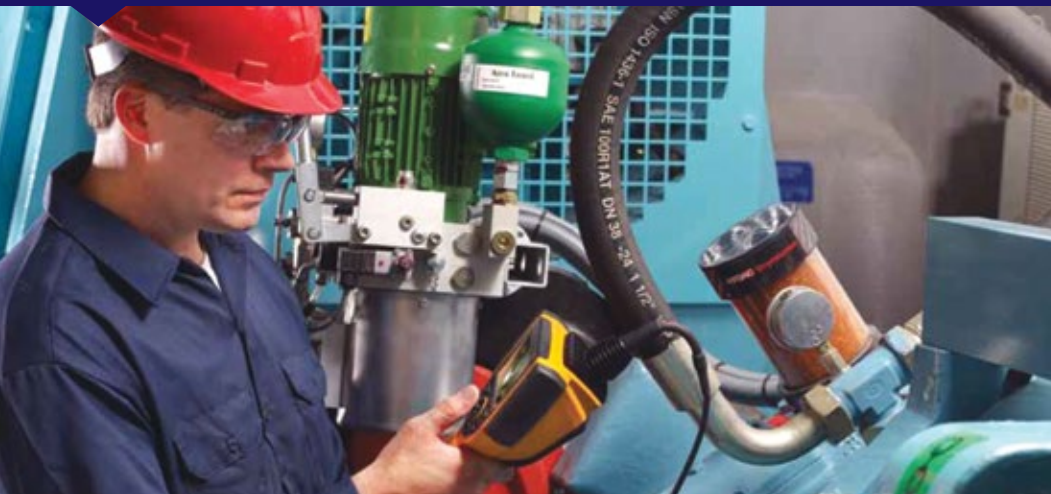


# REMOTE VISUAL INSPECTION (RVI) XL-GO CAMERA



FOR ALL YOUR INSPECTION NEEDS

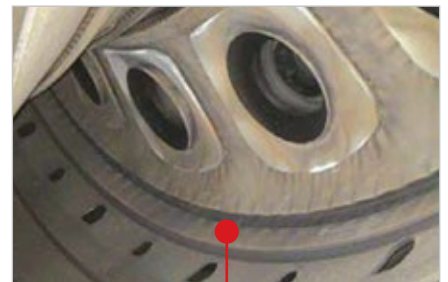


The XL Go Video Probe system combines portability with performance delivering sharp, clear digital images on a system designed to meet inspection needs across a wide range of industry applications.

XL Go+ combines cordless operation with a host of features found in systems three times as large. Unlike other video borescopes, the XL Go+ has no bulky base unit, no backpacks, no tethered scopes or power cords to get in the way—ensuring unlimited inspection access and unprecedented ease of use.

The ultra-compact XL Go+ VideoProbe system doesn't sacrifice image quality for the sake of portability. Its white LED and crystal-clear active matrix VGA LCD give inspectors the sharp, detailed images needed to ensure accurate detection and analysis, even in applications with poor lighting conditions. The LCD display has enhanced image quality for better readability in sunny or snowy outdoor environments and harsh indoor lighting. An intuitive user interface makes it easy to save still images or record motion video to the internal flash memory or removable USB stick.

**The camera probe is fully articulated with thumb controlled joystick and has expert light illumination built in.**



## Equipment Specification:

Camera	High resolution super wide angle
Probe Diameter	3.9mm to 5mm
Inspection Distance	Up to 10 meters
Bends	2 bends
Illumination	GE Expert light system
Sealing	Heat resistant up to 100 celcius
Control System	Joystick controlled
Operating/Charge Time	2 hours