

DACON INERTIAL MEASUREMENT (GEOMETRICAL) UNIT (IMU)

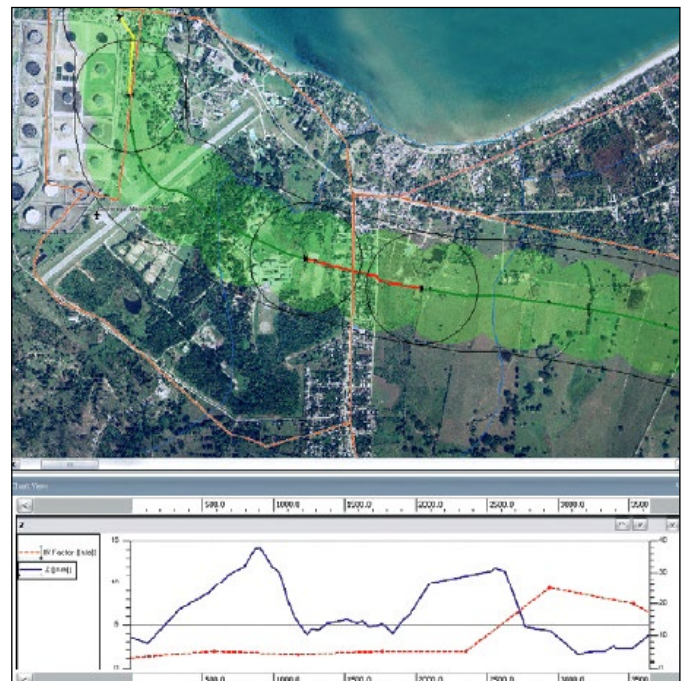


FOR ALL YOUR INSPECTION NEEDS

Dacon's high precision Inertial Measurement Units are used to obtain high quality data for the Dacon XYZ inspection and reporting service.

Data obtained from the IMU is used to produce coordinates for 3d or 2d mapping of the precise location of defects in the pipeline and to allow for a snapshot overview of the pipeline perspective for easy visualization of where any defects are located in terms of depth and distance.

IMU can be used to track pipeline movement over time due to circumstances such as anchor drag, earthquake or landslide. Inspection results are compared to original baseline XYZ mapping to compare trajectory's and detect any movement.



Dacon Inertial Measurement Unit

- Visualization of the Pipeline with 3D Mapping
- Baseline Surveys
- Defect Location
- Detecting Pipeline Movement
- Onshore and Offshore
- Producing Coordinates For Layout Drawings
- Understanding Corrosion Patterns
- Analysis of Bend Strain